

# Children and Young people's (CYP) wellbeing - it's Everybody's Business

Establishing Mental Health Support Teams in  
Berkshire West



**WOKINGHAM**  
BOROUGH COUNCIL



Healthcare  
from the heart of  
your community



Berkshire Healthcare **NHS**  
NHS Foundation Trust

**NHS**  
Berkshire West  
Clinical Commissioning Group

# Everybody's Business

Introduction

What is the purpose of the project and who are we working with

Ideal model of delivery

What's on offer now....

Any Questions

# Everybody's Business

Core elements to the Green Paper proposals:

1. Designated Senior Leads for Mental Health in schools and colleges;
2. Mental Health Support Teams working across schools and colleges;

# Everybody's Business

## Senior Mental Health Lead

- Existing school staff from the senior leadership team that oversee the school's approach to mental health support, for staff as well as for children and young people.
- Being a strategic leads and not expected to be carrying out direct interventions with CYP. Training and support for schools bringing in DSLs is managed by the Department for Education.
- Trained and supported by mental health support team leaders.
- The lead must link to MHSTs locally where these teams are serving their schools

# Everybody's Business

## Mental Health Support Team (MHST)

A new NHS-funded team of mental health support staff. They will:

- provide interventions for CYP with **mild to moderate needs** in schools and colleges across their patch,
- work with school or college staff – including designated mental health leads - to ensure mental health and wellbeing is supported as part of a 'whole school' approach.
- work as part of an integrated referral system with CYP mental health services

# Everybody's Business

**Healthcare**  
from the **heart** of  
your **community**

Berkshire Healthcare **NHS**  
NHS Foundation Trust

 **Reading**  
Borough Council  
Working better with you

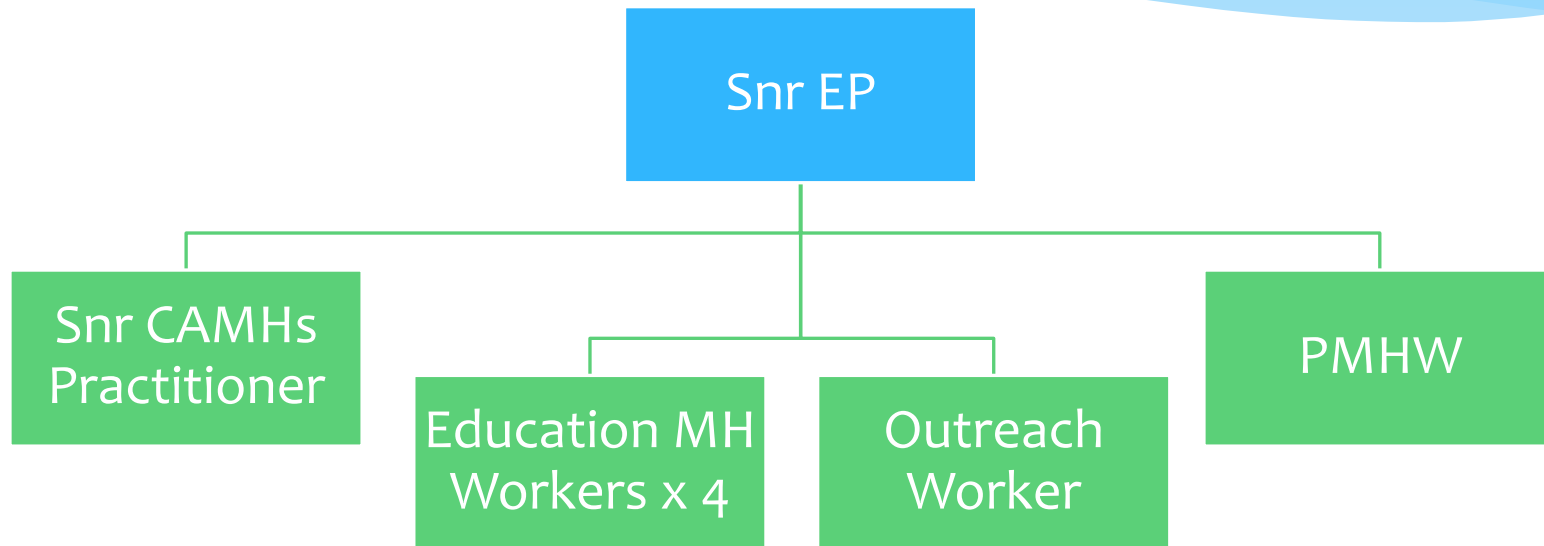
**NHS**  
Berkshire West  
Clinical Commissioning Group

  
**West Berkshire**  
C O U N C I L

  
**Brighter  
Futures for  
Children**

  
**WOKINGHAM  
BOROUGH COUNCIL**

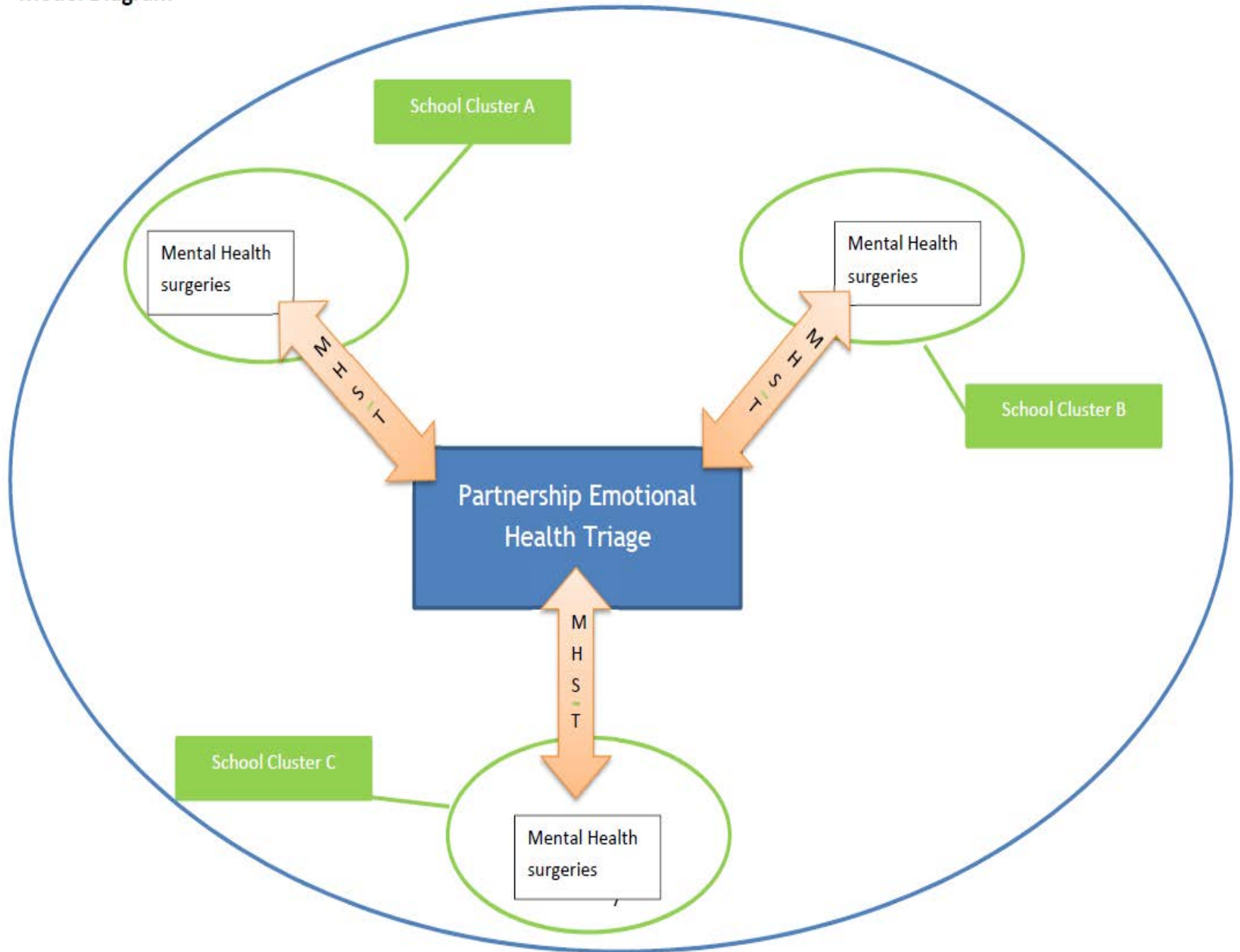
# Everybody's Business



# Everybody's Business

- The MHST is a multi-disciplinary team that will offer a range of services under the Thrive Elaborated Model.
- The Model will bring together the following components:
  - A Multi-Agency Triage (Route of access, support coordination and monitoring)
  - An Educational Psychology and School led School Surgery system
  - A range of early intervention workers comprising of Primary Mental Health Workers, Education Mental Health Practitioners and an Outreach Worker
  - Specialist support and supervision from a Senior BHFT CAMHS Practitioner

# Model Diagram



# Everybody's Business

## For Reading CYP

MHST web page: <https://brighterfuturesforchildren.org/for-young-people/mental-health-support-team/>

Online referral form: [www.brighterfuturesforchildren.org/MHST-referral-form](http://www.brighterfuturesforchildren.org/MHST-referral-form)

## Contact details

Telephone: 0118 937 6548

Email: [MHST@brighterfuturesforchildren.org](mailto:MHST@brighterfuturesforchildren.org)

# Everybody's Business

## Reading MHST Schools (team 1)

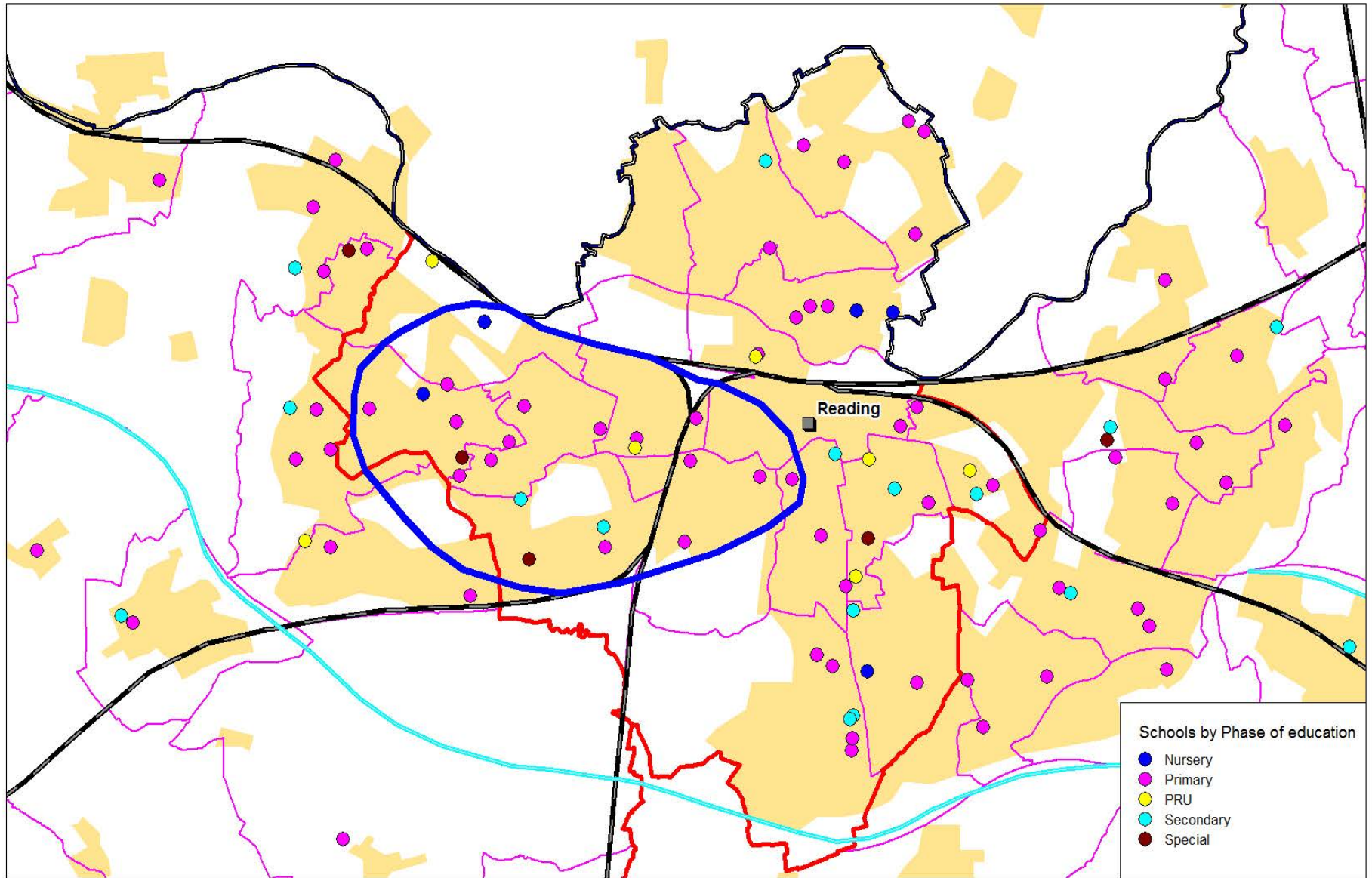
### School

- Battle Primary Academy
- Churchend Primary Academy
- English Martyrs' Catholic Primary School
- Manor Primary School
- Meadow Park Academy
- Moorlands Primary School
- Oxford Road Community School
- Park Lane Primary School
- Ranikhet Academy
- St Michael's Primary School
- Wilson Primary School
- Southcote Primary School
- Cranbury College
- Blessed Hugh Farringdon Catholic School
- Prospect School
- The WREN School

### Type

Primary  
Primary  
Primary  
Primary  
Primary  
Primary  
Primary  
Primary  
Primary  
Primary  
Primary  
Primary  
Pupil Referral Unit (PRU)  
Secondary  
Secondary  
Secondary

# Reading MHST Schools



Schools\_MHST\_1218.WOR 11/12/2018 Sid Beauchant BHFT

© Crown Copyright and database rights - 2018 OS 100051367. All rights reserved,  
NAVTEQ data by permission of NAVTEQ Corporation Licence No. NVMM0611, NVMM0612)  
GeoPlan data by permission of Geoplan (Licence No. GPKW9912)

# Everybody's Business

## West Berks Local Authority CYP

Use the Emotional Health Triage -

<https://directory.westberks.gov.uk/kb5/westberkshire/directory/service.page?id=upYcDgaijYw>

For professional referrals to triage, please complete a referral form  
(to download: <http://info.westberks.gov.uk/CHttpHandler.ashx?id=46625&p=0> )

and then email this to:

[emotional.health.triage@westberks.gov.uk](mailto:emotional.health.triage@westberks.gov.uk)

Or call: 01635 519018

Or there is an online version at:

<http://www.westberkseducation.co.uk/Services/2746>

# Everybody's Business

## West Berks MHST Schools (team 1)

### School

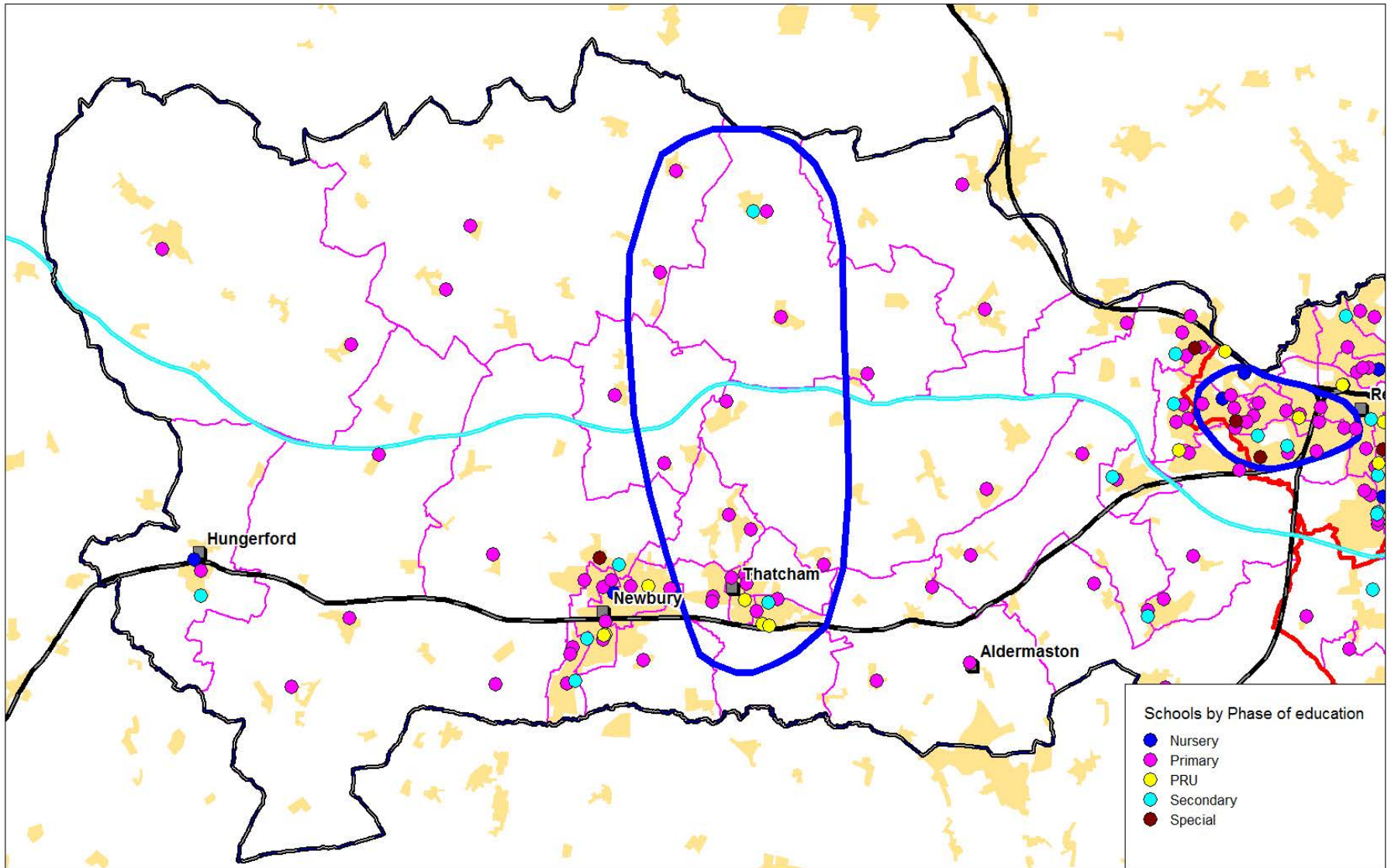
- Brimpton Primary
- Beedon C.E. (Controlled) Primary School
- Bradfield C.E. Primary School
- Brightwalton C.E. Aided Primary School
- Bucklebury C.E. Primary School
- Chaddleworth St Andrew's C.E.
- Chieveley Primary School
- Cold Ash St Mark's C.E. School
- Compton C.E. Primary School
- Curridge Primary School
- Francis Baily Primary School
- Hampstead Norreys C.E. Primary School
- Hermitage Primary School

### Type

- Primary
- Primary
- Primary
- Primary
- Primary
- Primary
- Primary
- Primary
- Primary
- Primary
- Primary
- Primary

- Hungerford Primary School Primary
- Inkpen Primary School Primary
- Kintbury St Mary's C.E. Primary
- Lambourn CofE Primary School Primary
- Parsons Down Junior School Primary
- Shefford C.E. Primary School Primary
- Spurcroft Primary School Primary
- St Finian's Catholic Primary School Primary
- Thatcham Park CofE Primary Primary
- Whitelands Park Primary School Primary
- Yattendon C.E. Primary School Primary
- John O'gaunt School Secondary
- Kennet School Secondary
- The Downs School Secondary

# West Berkshire MHST Schools



Schools\_MHST\_1218.WOR 11/12/2018 Sid Beauchant BHFT

© Crown Copyright and database rights - 2018 OS 100051367. All rights reserved,  
NAVTEQ data by permission of NAVTEQ Corporation Licence No. NVMM0611, NVMM0612)  
GeoPlan data by permission of Geoplan (Licence No. GPKW9912)

# Everybody's Business

## Wokingham Local Authority CYP

Use Common Point of Entry whilst the team and triage arrangements are being set up.

### School

- Keep Hatch
- Hawkedon
- Hawthorns
- Winnersh
- All Saints
- South Lake
- Loddon
- Foundry College
- The Holt
- The Forest
- St Crispins
- Maiden Erleigh

### Type

Primary  
Primary  
Primary  
Primary  
Primary  
Primary  
Primary  
Pupil Referral Unit (PRU)  
Secondary  
Secondary  
Secondary  
Secondary

# Everybody's Business

**In summary our model will offer success at a number of levels;**

- Whole school change and practice – support to schools to navigate MH; early intervention
- System wide transformation based on the Thrive Elaborated model, where there is a whole systems approach to improving children's mental health and emotional wellbeing utilising the strengths of all sectors and services.
- Evidenced based treatments impact measured and assured by clear routine outcome measures.

# Every Bodies Business

## Schools;

As an overview we will be working with 42 schools within the trailblazer site. Of these:

- 26 are in West Berkshire for one MHST, with 3 Secondary Schools and 23 Primary Schools
- and 16 in Reading for our other MHST, with 3 Secondary Schools, 12 Primary Schools and 1 Pupil Referral unit.

	Total	Secondary	Primary	PRU
Academy	9	4	5	0
Foundation School	1	1	0	0
LA community Maintained	16	0	15	1
Voluntary Aided/ Controlled	16	1	15	0

# Every Bodies Business

**Thank you &**

**Questions and comments?**